

CompactDry × Raw Meats

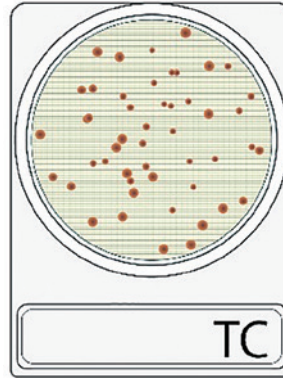


A comparison for 24 h incubation

CompactDry TC is the ready-to-use microbiology culture media. It detects Aerobic Bacteria in 48hours. Receiving a large amount of raw materials sometimes causes tight space in your warehouse.

Therefore, CompactDry TC was verified for the 24hours detection using the matrix of raw meats against the reference method.

Reference method; FSIS MLG 3.02 Section 3.6
Plate Count Agar (Oxoid) 35 ± 1°C for 48 ± 3 h
 Testing Laboratory; Campden BRI, UK



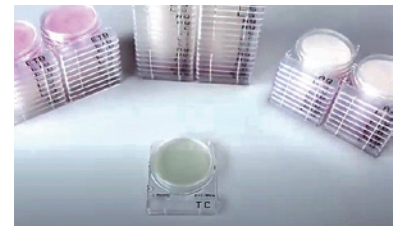
Equivalence to the reference method

Method comparison data for CD 24 h incubation

Matrix	Cont. level	Mean Log ₁₀ CFU/g		DOM
		TC	MLG 3.02	
Raw Chicken	Low	3.458	3.390	0.069
	Med	5.691	5.788	-0.097
	High	7.487	7.333	0.153
Raw Beef	Low	2.189	2.368	-0.180
	Med	5.519	5.881	-0.362
	High	7.399	7.577	-0.177

All of these matrix were in the -0.5 to +0.5 log values.

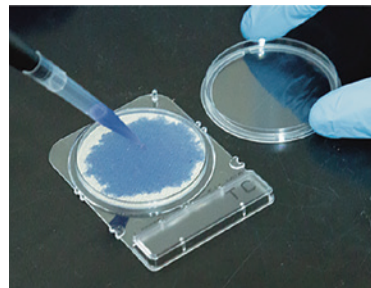
Cont.=Contamination level
 N=5 Average
 DOM = Difference of Means
 Note; Raw Pork ,Raw Lamb are not scoped.



Applications

At warehouse in the meat-processing-companies, you receive many raw materials every day. In the conventional Aerobic Counting method, you have to wait for 48hours to release the material.

CompactDry TC enables to pass the material to the next production process one day earlier. This will result in working better operations in a warehouse.



Manufacturer

Shimadzu Diagnostics Corporation

Address: 20th floor, Ueno Frontier Tower 3-24-6, Ueno, Taito-ku, Tokyo Japan

Web: <https://corp.sdc.shimadzu.co.jp/english/>